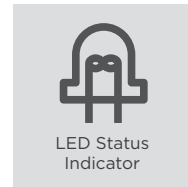
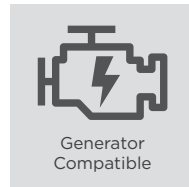
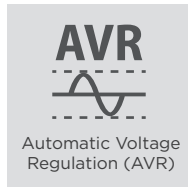
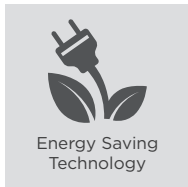
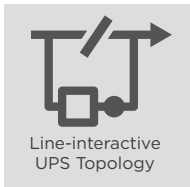




ENERGY-SAVING DESKTOP UPS



The energy-efficient UPS to save 70% of power consumption

Ideal for home and office applications, the BU Series adopts line-interactive topology with Automatic Voltage Regulation (AVR) function to offer stabilized AC power output. The patented GreenPower UPS™ Bypass design achieves ultra-low power consumption to reduce energy costs. The UPSs also feature overload protection and configurable alarm to safeguard your devices. The desktop design with mounting slots allows users to place it easily on walls, desks or other tight spaces.

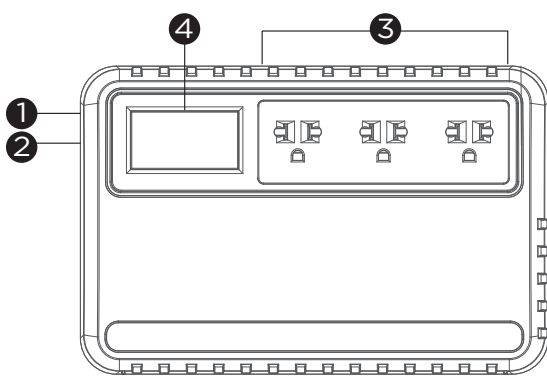
SERIES FEATURES

- Line-interactive UPS Topology
- Energy Saving Technology
- Automatic Voltage Regulation (AVR)
- Generator Compatible
- LCD Status Display
- LED Status Indicator
- Overload Protection
- Surge and Spike Protection
- Wall Mount Installation*
- EMI and RFI Filtration
- Configurable Alarm

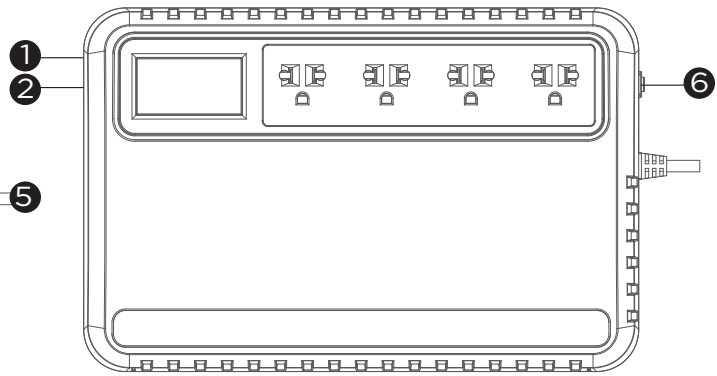
*Selected Model(s)

PRODUCT CALLOUTS

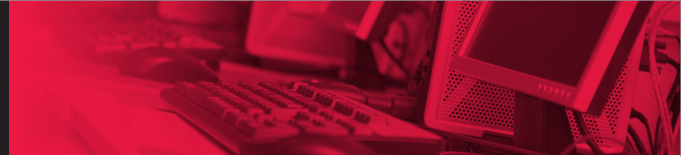
1. Power On Indicator
2. Power On/Off Switch
3. Battery Backup & Surge Protected Outlets
4. LCD Display Panel
5. AC Input Power Cord
6. Input Circuit Breaker



BU800ELCD



BU1000ELCD



TECHNICAL SPECIFICATIONS

Model Name	BU800ELCD	BU1000ELCD
General		
UPS Topology	Line-interactive	
Energy Saving Technology	GreenPower UPS™ Bypass Technology	
Input		
Generator Compatibility	Yes	
Nominal Input Voltage (Vac)	220/230/240	
Input Voltage Range (Vac)	165 - 280	
Input Frequency (Hz)	50 ± 5, 60 ± 5	
Input Frequency Detection	Auto-sensing	
Rated Input Current (A)	3.64	4.55
Input Connector Type	NEMA 5-15P	
Output		
Capacity (VA)	800	1000
Capacity (Watts)	480	630
On Battery Waveform	Simulated Sine Wave	
On Battery Voltage(s) (Vac)	230 ± 10%	
On Battery Frequency (Hz)	50 ± 1%, 60 ± 1%	
Automatic Voltage Regulation (AVR)	Single Boost, Single Buck	
Overload Protection	Fuse	Circuit Breaker
Outlet(s) - Total	3	4
Outlet Type	AS x 3	AS x 4
Outlet(s) - Battery & Surge Protected	3	4
Typical Transfer Time (ms)	4	
Battery		
Runtime at 60W (min)	42	74
Runtime at 90W (min)	27	45
Typical Recharge Time (Hours)	8	
User-replaceable	No	
Battery Type	Sealed Lead-acid	
Surge Protection & Filtering		
Surge Suppression (Joules)	150	
EMI/RFI Filtration	Yes	
Management & Communications		
LCD Panel	Yes	
LED Indicators	Power On, Line Mode, Battery Mode, Low Battery	
Audible Alarms	Battery Mode, Low Battery, Overload, UPS Fault	
Physical		
Form Factor	Desktop	
Physical Size - UPS Module		
Dimensions (WxHxD) (mm.)	158 x 91.5 x 240	190 x 110.5 x 290
Weight (kg.)	4.2	7
Environmental		
Operating Temperature (°C)	0 - 40	
Operating Relative Humidity (Non-condensing) (%)	0 - 90	
Online Thermal Dissipation (BTU/hr)	40	45
Certifications		
RoHS	Yes	

*Certifications may vary according to different regions. Visit www.cyberpower.com for more information.
 #All specifications are subject to change without notice.